

SLIDE-LOK®

Garage & Storage Cabinets

**READ ALL INSTRUCTIONS BEFORE YOU BEGIN.
DO NOT JUMP AHEAD OF ANY STEP.**

If this is your first time assembling a SLIDE-LOK cabinet, you may find it helpful to first assemble the cabinet without gluing to give yourself the opportunity to become familiar with the assembly process of SLIDE-LOK storage cabinets. All components will slide together without force or effort if the dovetails are lined up properly. Do not force. If force or exertion is necessary, pieces are not aligned correctly. Take apart and start over. Be sure to glue all joints at time of assembly. Allow glue to completely dry before installing.

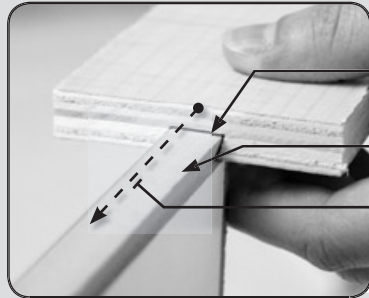


W3618 - Wall Cabinet

Assembly Instructions

slide-lok.com/assembly/W3618

The Patented Dovetail Assembly System



Female Dovetail
Glue this edge

Male Dovetail

Slide Together
Slide Female dovetail into Male dovetail

Quick And Easy Assembly

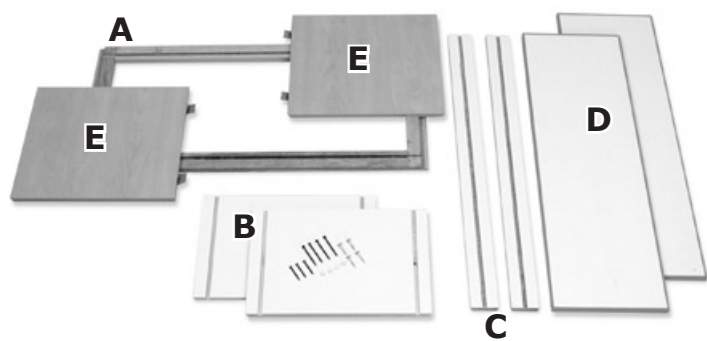
All components will slide together without force or effort if the dovetails are lined up properly. If force or exertion is necessary, pieces are not aligned correctly.



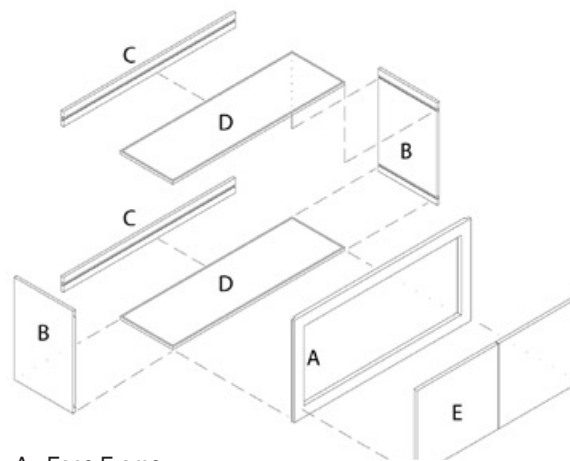
**Simply Slide A Into B
It's That Easy!**

Step 1. - Identify all Pieces

Remove cabinet parts from box and identify all pieces as pictured in fig. 1.



[fig 1]

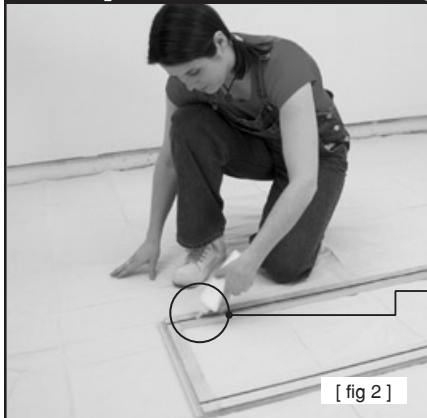


A. Face Frame
B. Side Panels
C. Shelf Nailers
D. Top and Bottom Shelves.
E. Doors

- (4) 1 1/2" Door screws
- (4) Clear bumpers
- (4) 2 1/2" Black installation screws
- (3) 1 1/4" Black screws for joining cabinets together



Step 2. - Attaching Top and Bottom Shelves



[fig 2]

Place face frame "A" face down on a smooth surface to prevent scratching, (like the box it came in). Glue all female dovetail joints as shown in Figure 2. Slide shelves "D" into position while aligning as in figure 2A & figure 2B, with holes closest to the face frame.



NOTE:
A general purpose carpenter's wood glue is recommended for assembly. Apply a 1/16" bead of glue to the entire length of the female Dovetail joint

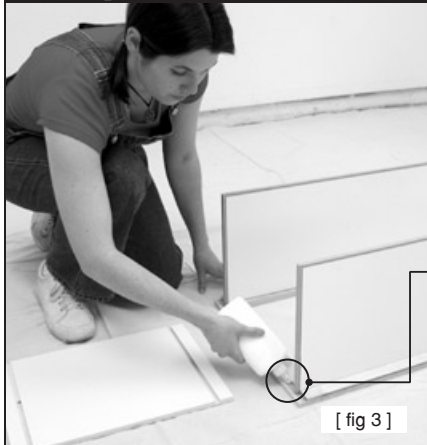


[fig 2A]



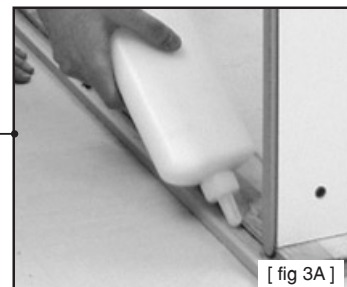
[fig 2B]

Step 3. - Attaching the First Side Panel

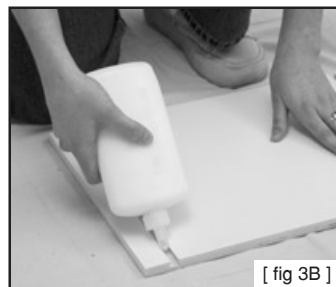


[fig 3]

Glue rabbet joint as in fig. 3A. Dovetail joint and side panel as in fig. 3B. Slide one side panel "B" into place while aligning dovetails on top and bottom of both shelves (see fig. 3C). Make sure to start all dovetails simultaneously, then slide side panel into rabbet joint as in fig. 3D & 3E.



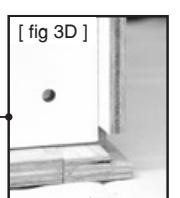
[fig 3A]



[fig 3B]



[fig 3C]



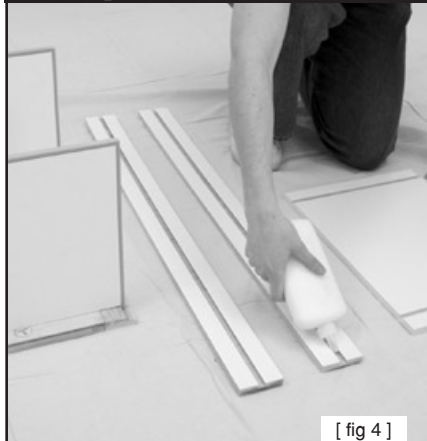
[fig 3D]



[fig 3E]

DO NOT SLIDE OTHER SIDE PANEL ON AT THIS TIME.

Step 4. - Attaching Top and Bottom Nailers



[fig 4]

Glue the female dovetail on the nailer "C" (fig. 4). Slide one nailer onto the top shelf (fig. 4A) and one nailer onto the bottom shelf (fig. 4B). Make sure they touch the side panel.



[fig 4A]



[fig 4B]

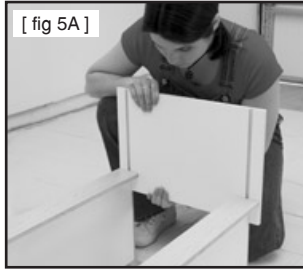
Remember to follow the steps exactly as shown. Do not jump ahead, or you'll get tangled up!

Step 5. - Attach Second Side Panel



[fig 5]

Repeat STEP 3 for the other side panel see fig. 5 and 5A. Glue all female dovetail joints as shown in Figure 5. Slide shelves "D" into position while aligning as in figure 5A.



[fig 5A]

Step 6. - Let Glue Dry

To ensure cabinet integrity, please allow glue to dry completely before proceeding to step 7.



Before Proceeding to the next step, let glue dry completely.

Step 7. - Fasten Cabinet to Wall



[fig 7]

After glue is dry, find studs in wall, figure 7. Attach Cabinet to the studs in wall using the 2 1/2" screws, see figure 7A

It is important that the cabinet is hung level and fastened to wall studs for stability and strength.



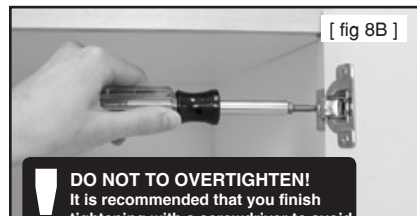
[fig 7A]

Step 8. - Hang Cabinet Doors



[fig 8]

To hang doors, use the 1 1/2" silver screws. Hold door up so the door hinge hole lines up with the pre-drilled hole in the face frame. Screw in the hinge so the doors are level across the top and flush in the front. Take clear bumpers and attach as in fig. 8D, to top and bottom of doors.



[fig 8B]

DO NOT TO OVERTIGHTEN! It is recommended that you finish tightening with a screwdriver to avoid stripping the pre-drilled holes.

NOTE: Hinge is 6 way adjustable (up, down, in out, back and forth) fig. 8A.

- Back and Forth
- Up and Down
- In and out



[fig 8C]



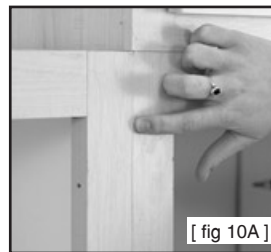
[fig 8D]

Step 10. - Congratulations!

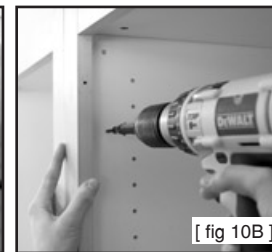


NOTE: - Attaching Two or More Cabinets

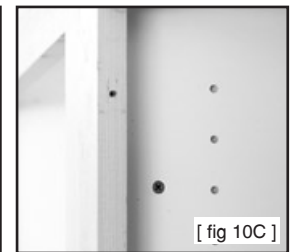
When putting two cabinets together, hold both face frames flush, see fig. 10A. Take a 1 1/4" screw and insert it behind the face frame, into the side panel of one cabinet through the other cabinet's side panel, screwing it tightly together see figures 10B & 10C. Do this at the top, middle and bottom of the cabinet.



[fig 10A]



[fig 10B]



[fig 10C]

CONGRATULATIONS!

You have just finished assembling and installing a SLIDE-LOK cabinet.

SLIDE-LOK
Garage & Storage Cabinets



Design Your Own SLIDE-LOK Storage Solution

Visit Jack's Design Center, an interactive SLIDE-LOK Storage System design tool, which will enable you to design your own SLIDE-LOK Storage system online

Jack's Design Center simplifies the process of designing your own SLIDE-LOK Storage Solution with features such as user dimensions, a parts list generator and the ability to print your SLIDE-LOK creation, making ordering your next SLIDE-LOK Storage System easier than ever.

www.slide-lok.com | 800-835-1759